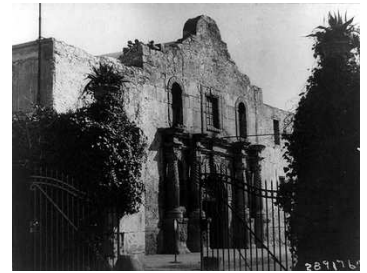




Special



Camping



As with any work such as this, numerous individuals have contributed many hours of time and effort in order for this document to be produced. **Thanks** to all of those who have contributed information used in this document. Without all of you, this document would not have been possible.

This is an on-going project. If you have any information to contribute for the next edition please feel free to contact:

Al Davis
Ta Tsu Twa Lodge 138
Camping Book Committee Advisor

OACampingBook@dcemail.com
(918) 747-4802

Table of Contents

U.S.S. LEXINGTON	5
OVERNIGHT PROGRAM.....	6
<i>Itinerary</i>	6
<i>Who Can Participate?</i>	7
<i>Leader / Camper Ratio</i>	7
<i>What Does it Cost?</i>	7
U.S.S. TEXAS	8
SLEEP OVER ON THE BATTLESHIP	9
BATTLEGROUND PROGRAMS.....	9
BUTTERFIELD TRAIL.....	10
REGULATIONS	10
YOUTH GROUP INFORMATION.....	11
ILLINOIS RIVER.....	12
REQUIREMENTS.....	12
PATCH	12
CONTACT INFORMATION	13
LOST BRIDGE TRAIL.....	14
BEAVER LAKE LOST BRIDGE TRAIL COMPLETION PATCH.....	14
ABOUT THE TRAIL.....	15
MISSION HISTORICAL TRAIL.....	16
MISSIONS HISTORICAL TRAIL PATCH.....	16
MISSION HISTORICAL TRAIL REQUIREMENTS	17
MCGIMSEY SCOUT PARK	18
POTTER’S CREEK PARK.....	19
<i>Potter’s Creek Map</i>	20
OLD SPANISH TREASURE CAVE.....	21
PEA RIDGE NATIONAL MILITARY PARK	22
PEA RIDGE PATCH.....	23
PARK MAP.....	24
VICKSBURG NATIONAL MILITARY PARK.....	25
U.S.S. CAIRO GUNBOAT AND MUSEUM	25
VICKSBURG MAP.....	26
VICKSBURG NATIONAL CEMETERY	27
COMMANDERS AND TROOPS	27
WILSON’S CREEK NATIONAL MILITARY PARK	28
OPERATING HOURS	28
PARK MAP.....	29
ZINK TRAILS.....	30

REQUIREMENTS..... 30

Black Dog Trail Requirements 30

Lake Canoe Requirements: 31

Lake To Lake Requirements..... 31

Pack And Paddle Requirements..... 31

COMPLETE PATCH..... 32

CONTACT INFORMATION 32

U.S.S. Lexington

PO Box 23076
2914 N. Shoreline Blvd
Corpus Christi, TX 78403

800-LADY LEX
361-888-4873

Museum Hours of Operation

9am to 5pm

(Labor Day through Memorial Day)

9am to 6pm

(Memorial Day through Labor Day)

Admission Pricing

\$12.95 – Adults

\$10.95 – Seniors (60 & above) and Active or Retired Military

\$7.95 – Children 4 to 12

Free – Children 3 & under

<http://www.usslexington.com>



Overnight Program

An adventure awaits your group when they Live Aboard the USS LEXINGTON. Learn first hand about the illustrious past of LEXINGTON, including kamikaze attacks and being named the 'Blue Ghost' by Tokyo Rose herself. It's a real-life, hands-on overnight program that builds camaraderie, inspires love of country and is just plain fun!

The overnight stay includes tours of the ship, a movie in the MEGA Theater, three trips through the chow line, bunking in original crew quarters, an unforgettable flag ceremony and so much more!

Itinerary

From the moment your group arrives you know you are in for a great adventure. Listen carefully as the Captain reminds his recruits that shirts must be tucked in, shoes tied and hats on straight and always yes sir or no sir are expected. It's part education and all fun!

DAY 1	
1000 - 1130	Arrival & Check-In
1200 - 1500	Lunch, Free Time for Swimming, Beach Combing
1600 - 1730	General Assembly/MEGA Theater Class A uniforms requested at this time
1730	Chow
1830	Evening Colors
1930	Tours of LEXINGTON
2130	Game Room & Ghost Stories
2330	Lights-Out/Taps
DAY 2	
0645	Reveille
0715	Morning Colors
0725	Move-out
0800	Breakfast
0915	Muster Out Ceremony
1000	Depart for home.
(Subject to change)	

Who Can Participate?

The program is available to all organized youth groups: Church, School, YMCA/YWCA, BSA, GSA, etc. Each group must have a minimum of 15 persons. Unless a total minimum of 30 persons (youth and leaders) from all groups has reservations for any one-day, Lexington reserves the right to cancel reservations at any time.

Leader / Camper Ratio

One leader is required for every 5 campers.

What Does it Cost?

Cost of the program is \$49.00 per person per night. This cost includes overnight stay in crew quarters, three meals (breakfast, lunch and dinner), self-guided tour of Lexington, planned activities on board and admission to the MEGA Theater. Also available at additional cost: The Mess Deck (9:00a.m. – 5:00 p.m.), Flight Simulator (\$4.00 per person) and a coin operated game room.

U.S.S. Texas

In 1948, the Battleship *Texas* became the first battleship memorial museum in the U.S. That same year, on the anniversary of Texas Independence, the *Texas* was presented to the State of Texas and commissioned as the flagship of the Texas Navy. In 1983, the *Texas* was placed under the stewardship of the Texas Parks and Wildlife Department and is permanently anchored on the Buffalo Bayou and the busy Houston Ship Channel. The Texas Parks and Wildlife Department's 1,200-acre San Jacinto Battleground State Historic Site consists of the Battleground, Monument and Battleship *Texas*. These sites are located within minutes of downtown Houston and a short distance to the beaches of Galveston Island. Millions of visitors come to this area each year to enjoy the mild coastal climate and cultural and sports activities. Students and visitors alike are most fortunate to be able to experience history first hand through living history at the San Jacinto Battleground and Battleship *Texas*.



Sleep Over on the Battleship

Students get to see what it would be like to be one of the troops during World War I and II. This activity is open to organized youth groups between the age of 7-18. Perform crew duties, learn about the early days of naval aviation, how radar was used, tour the ship and take your meals just like the sailors did more than 50 years ago. Time permitting, learn about nautical road knot tying, communications, and listen to naval yarns. A Battleground tour is included in this overnight experience. For reservations for this activity, contact the program director directly at (281) 542-0684.

Battleground Programs

Walk the Battleground and relive the famous battle for Texas Independence. Granite markers throughout the park designate locations of the Texian camps, the Mexican camps, the site of the advance by Texian forces and other strategic parts of the battle. Most markers can also be viewed from your vehicle. A "Battleground Walking Tour Guide" is available on the website or at the site headquarters.

Butterfield Trail

Regulations

1. Before you hike the trail, please obtain a hiking permit (free) from the park office at Devils Den and return the permit when you get off the trail.
2. Camping is not permitted along the trail that lies within the park boundary.
3. TRASH – If you pack it in---you pack it out. Do not bury trash: wild animals dig it up and scatter it.
4. When hiking – Stay on the maintained trails. Never run and do not cut switchbacks. Cutting across switchbacks hastens erosion.
5. Leave natural or historical features (wildlife, plants, geology, old home sites) undisturbed.
6. Camp at least 100 feet off trail and from any water source or historic structure.
7. Prevent pollution of streams and spring sites. Do not wash directly in them; keep soap and detergents out of the waterways.
8. Use a cook stove whenever possible. Do not cut any live or standing trees. Be careful with fires.

REMEMBER: “LET NO ONE SAY, AND SAY IT TO YOUR SHAME, THAT ALL WAS BEAUTY HERE UNTIL YOU CAME.”

Devil's Den State Park
West Fork, Arkansas 72774



Youth Group Information

1. Obtain a (free) hiking permit from the Devil's Den State Park office. (Maps and trail information are available at the park office.
2. Hike the entire length of the trail (approx. 14.5 miles)
3. Spend at least one night on the trail.
4. Know the First Aid Skill Award or basic First Aid.
5. Review the history of the Butterfield Overland Stage
6. Take a one-day "shake down" hike (recommended but not required).

To obtain the patch and/or medal, complete the form below and mail to:

Westark Area Council
Boy Scouts of America
1401 Old Greenwood Road
Fort Smith, AR 72901.

Please mail our group the following awards:

_____ medals @ 9.00 each.

_____ patches @ \$4.55 each.

_____ shipping.

Please call the Council Scout Shop (800-748-8509) for price.

I have enclosed \$_____

to cover the cost of the awards and shipping.

I certify that our _____ has completed the
(name of group)
Butterfield Hiking Trail and the special requirements to qualify for the awards.

(Signature of Group Leader)

Address: _____

City: _____ State _____

Zip: _____ Phone: _____

Illinois River

Requirements

Boy Scouts can earn this patch by completing the following requirements:

1. Float the Illinois or Barren Fork Rivers for three (3) consecutive days and camp two (2) nights on the banks of the river.
2. Complete two hours of a service project. This may be either a conservation project or clean-up of campsites or river bank.
3. Follow BSA regulations for Safe-Swim plan. Wear life jackets while in the canoe and live up to the standards of the Outdoor Code and Wilderness Use Policy.

Patch



Contact Information

Indian Nations Council

4295 S. Garnett Road
Tulsa, Oklahoma 74146

Phone (918) 743-6125
Toll free (800) 367-1272

Fax: (918) 743-6049

Lost Bridge Trail

Beaver Lake Lost Bridge Trail Completion Patch

This trail is located at Lost Bridge Park, a Corp of Engineers park on the north side of Beaver Lake, outside of Garfield.

Hike the trail, complete the worksheet below and turn it into Council along with a check for \$2 per patch plus postage to get your cloth-embroidered patch.

Mail to:

Westark Area Council
1401 Old Greenwood Road
Ft. Smith, AR 72901

1. What is the Approximate Length of the trail?
2. How many campsites are located in the Hiker's camp area?
3. What is the name of the man who built the cabin near the hiker's camp area?
4. What was his occupation?
5. Was his family wealthy?
6. There is a short-cut return to the Trail entrance from the
 - A. Hiker's camp area
 - B. Pond



Name of Scout _____ Unit _____

Verification Signature of Unit Leader _____

Unit Leader Address where patch is to be mailed:

Print Name _____

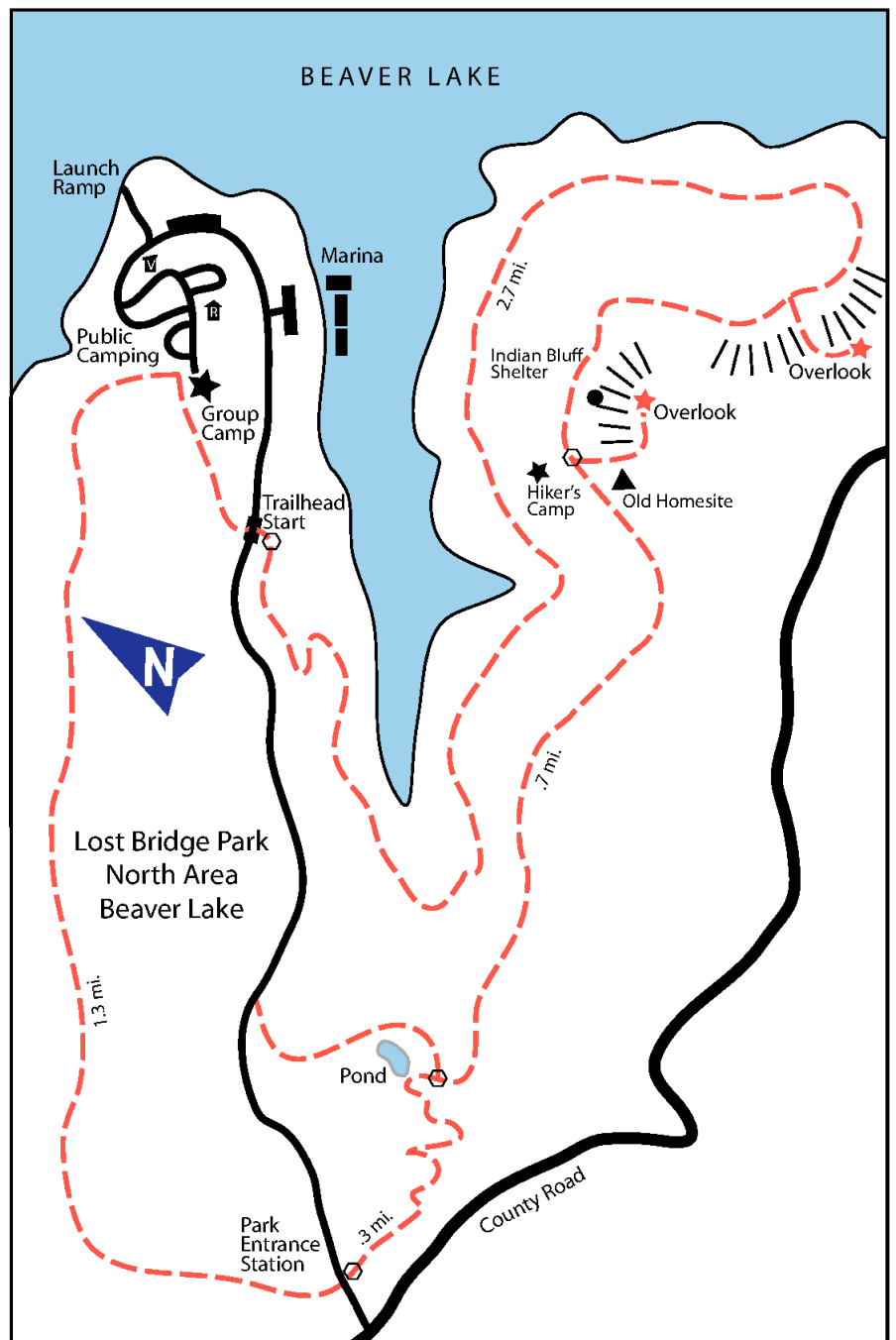
Mailing Address _____

City/State/Zip _____

About the Trail

This is a 5-mile loop trail on the edge of Beaver Lake. The trail is marked with paint blazes. To get to the trail, take Hwy 62 east out of Rogers to Garfield and turn south on Hwy 127. Travel 7 miles to the park (veer left on Hwy 127 S to the North Park). The trailhead is on the right as you head towards the marina. The Group Camp area, which has a pavilion, is reservable by contacting the Corp of Engineers Park Office at 479/359-3312 or the Rogers Corp office at 479/636-1210.

For detailed and insightful information about this trail and other trails in Arkansas, read *Arkansas Hiking Trails*, by Tim Earnst.



Mission Historical Trail

Alamo Area Council
2226 NW Military Hwy
San Antonio, TX 78213

Phone: (210) 341-8611
Fax: (210) 341-7641

The Alamo Tour will require about one hour to see the museum, etc. It is open from 9:00 am to 5:30 pm Monday thru Saturday, 10:00 am to 5:30 pm on Sunday. Mission San Jose is restored and a tour here requires about one hour. It has a museum, a gift-souvenir shop, and a bookstore. Guided tours are available with prior request at each mission. Picnics and rest periods may be held at any of the city parks along the trail. The tour starts the Alamo, hiking south to Mission Concepcion, Mission San Jose, Mission San Juan, and ending at Mission Espada.

Missions Historical Trail Patch

Hike the trail and answer the trail questions and you can earn this patch. The patch can be purchased from the Alamo Area Council.

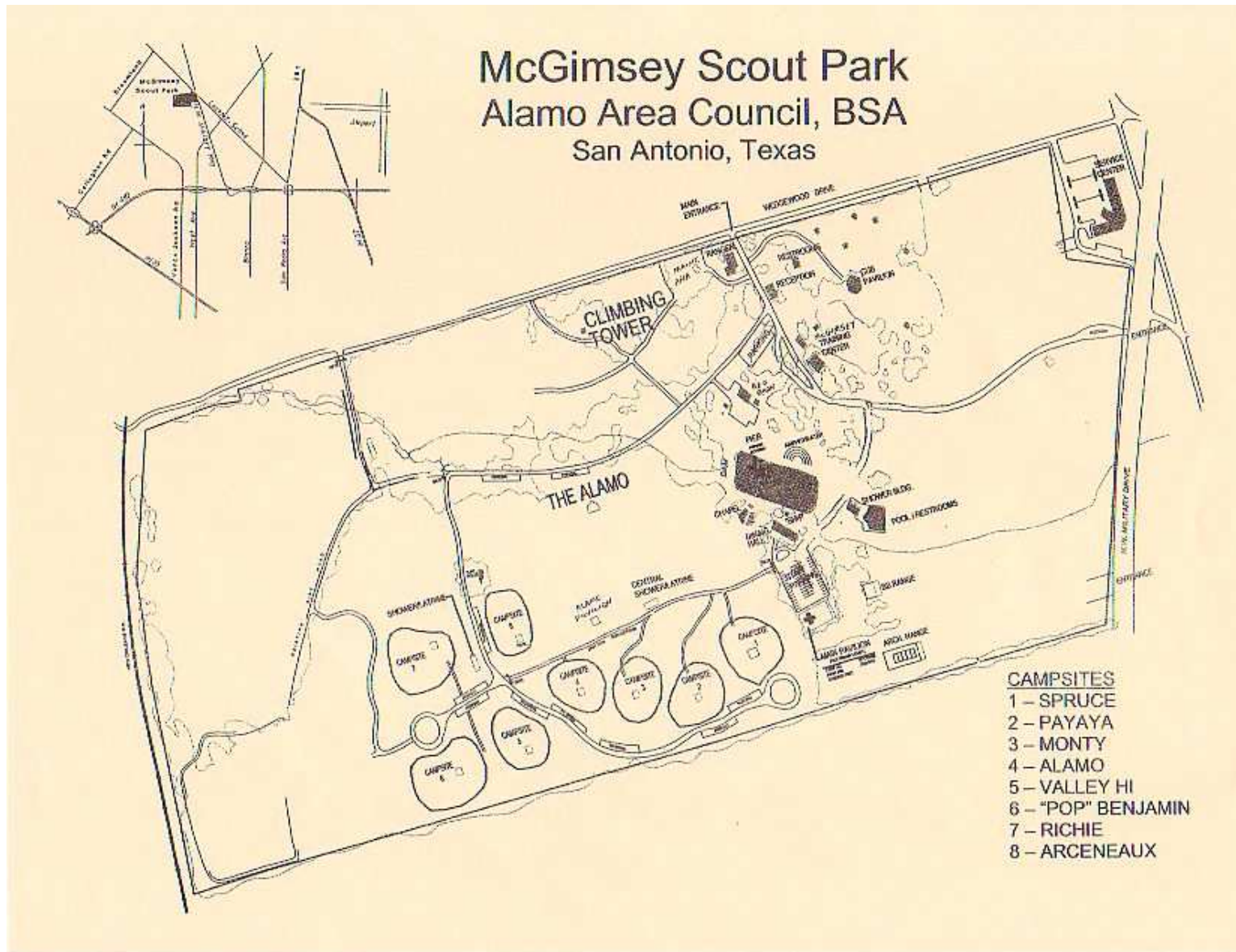


Mission Historical Trail Requirements

Answer the following questions while hike the Missions Trail.

1. The Alamo was originally known as Mission _____ de _____.
2. The Cenotaph on Alamo Plaza is a monument to _____.
3. Long after the Alamo ceased to be a mission, the famous Battle of the Alamo was won by Mexican General _____ on _____ 18____.
4. Most of the Indians who settled at the San Antonio missions had led a nomadic life style, obtaining their food by _____ and _____.
5. The Missions Trail follows one route of the old road system used by missionaries, soldiers, and settlers and was know as “El Camino _____.”
6. Original wall and ceiling paintings called _____ made with mineral dyes on plaster, have been extensively restored at Mission _____.
7. Mission _____ was never officially established but a monument at the Riverside Gold Course commemorates its temporary existence.
8. The Theodore Roosevelt memorial in front of the Highway Department building was erected by _____ on _____. He was known as the “_____”.
9. Mission _____, called the “Queen of Missions,” is known for its beautiful “_____” window; the choir loft stairway, which is made without _____; and the 1790’s mill, which used _____ power to grind wheat.
10. The San Antonio River, where it flows in its original channel near Mission _____ appears much as it did when the Spaniards first arrived.
11. The Espada acequia was built by Franciscan _____ and Coahuiltecan _____ to _____, it is noted for its stone _____ over Piedras Creek.
12. Originally founded in East Texas, Mission Espada was re-established on the San Antonio River in 17____.

McGimsey Scout Park



Potter's Creek Park

Potter's Creek Park is located on the northwest side of Canyon Lake off of Potter's Creek Road at the Hwy 484 (Fischer Road) junction. From IH 35 take FM 306 exit no.191 located just north of New Braunfels, travel west on FM 306 for 26 miles, or from US 281 take FM 306 east 10 miles. Turn south on Potter's Creek Road and continue two miles to reach the park entrance. Potter's Creek Park is a beautiful park that includes one hundred fourteen (114) modern RV campsites, seven (7) Screened Shelters, ten (10) designated tent camping sites, and five (5) Family Sites.

U.S. Army Corps of Engineers
Canyon Lake Office
601 C.O.E. Road
Canyon Lake, Texas 76513

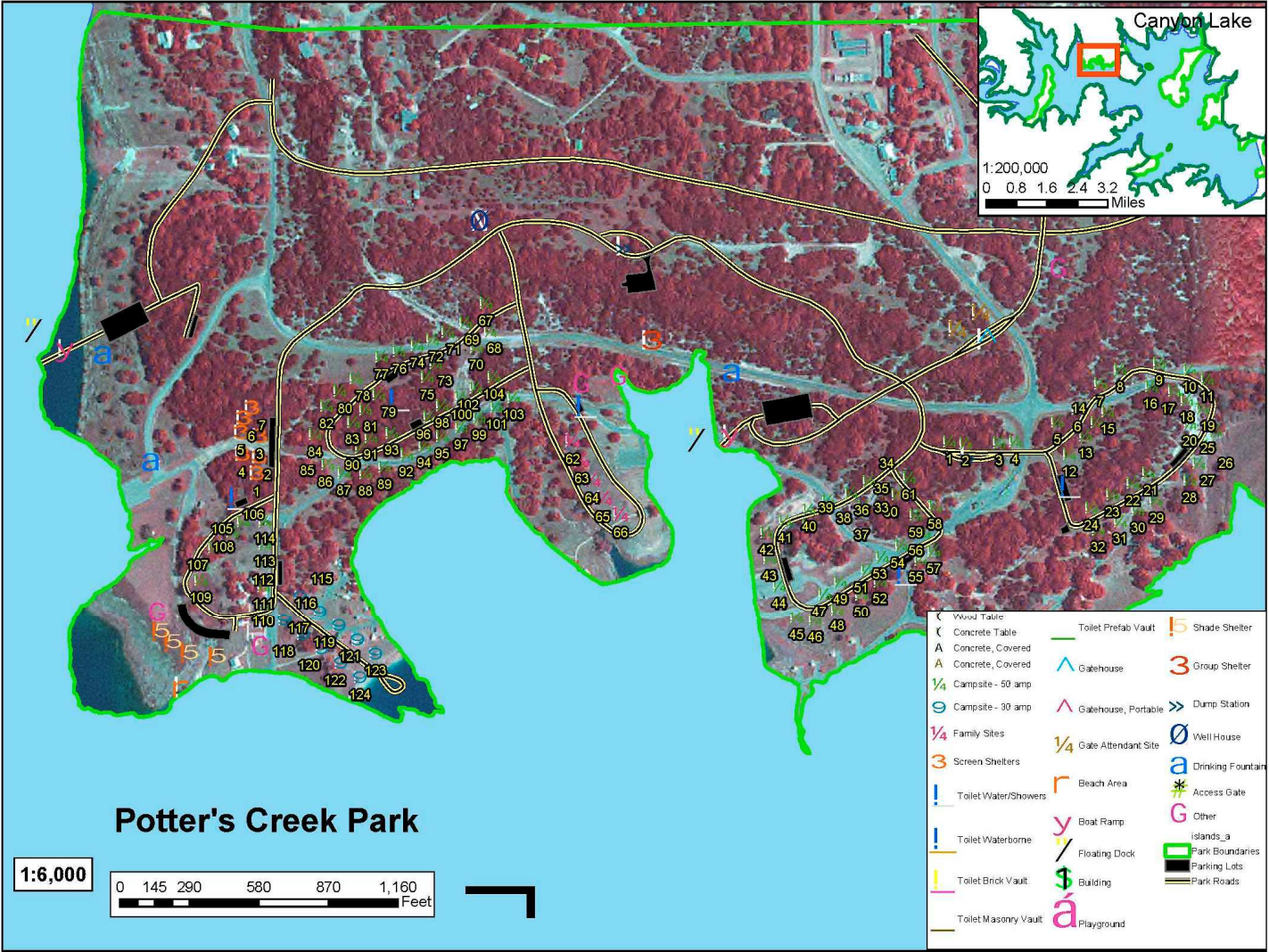
Hours: M-F 8am - 4:30pm

Phone: (830) 964-3341
Fax: (830) 964-2215

Email: CESWF-OD-CN@swf02.usace.army.mil -

Camping Reservations:
1-877-444-6777

Potter's Creek Map



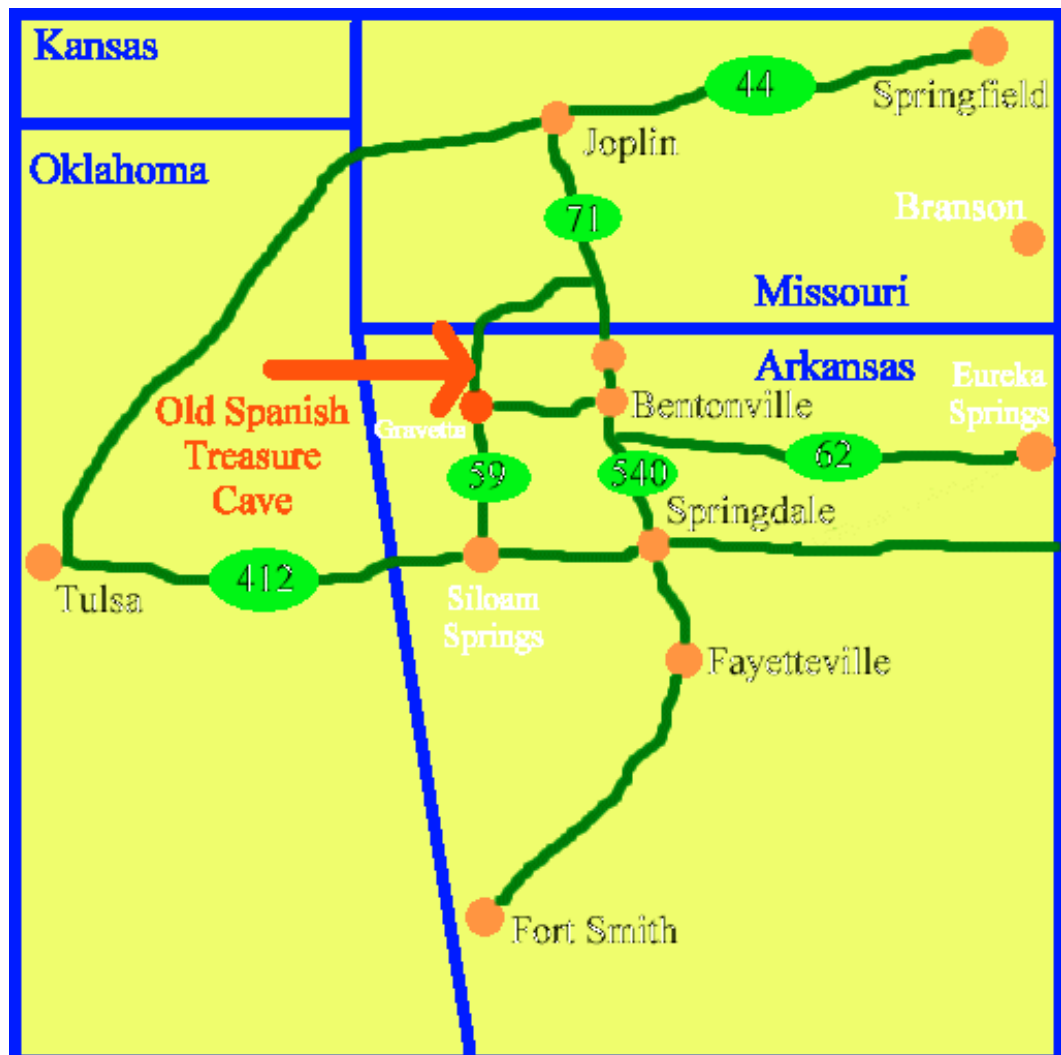
Old Spanish Treasure Cave

Step into the adventure of a guided tour through Old Spanish Treasure Cave, one of the Ozark's biggest mysteries. The Old Spanish Treasure Cave is Arkansas most historical cavern with fascinating legends of hidden treasure buried within. Learn why the unsolved mystery of the hidden treasure has kept the secrets alive in this cavern, and why it is believed the treasure is still here

This is a caving adventure your entire family or group will enjoy! The tours are an educational recreation for family, scout, youth and school groups.

Phone: 479-787-6508

Email: caveman@spanish-treasure-cave.com



Pea Ridge National Military Park

Pea Ridge NMP
15930 E Highway 62
Garfield, AR 72732

Visitors Center
(479) 451-8122 ext. 227

FAX (479) 451-0219

The park grounds are open year round 8-5 daily. The park is closed Thanksgiving, Christmas, and New Year's Day and in severe weather conditions.

Summer hours for the park begin Sunday June 22, 2008. Hours will be from 8 am to 7 pm except on July 4th when the park will close at 6 pm. The Visitor Center will be open 8 to 7 also.

On March 7 & 8, 1862, 26,000 soldiers fought here to decide the fate of Missouri. The 4,300-acre park honors those who fought for their way of life, North and South.

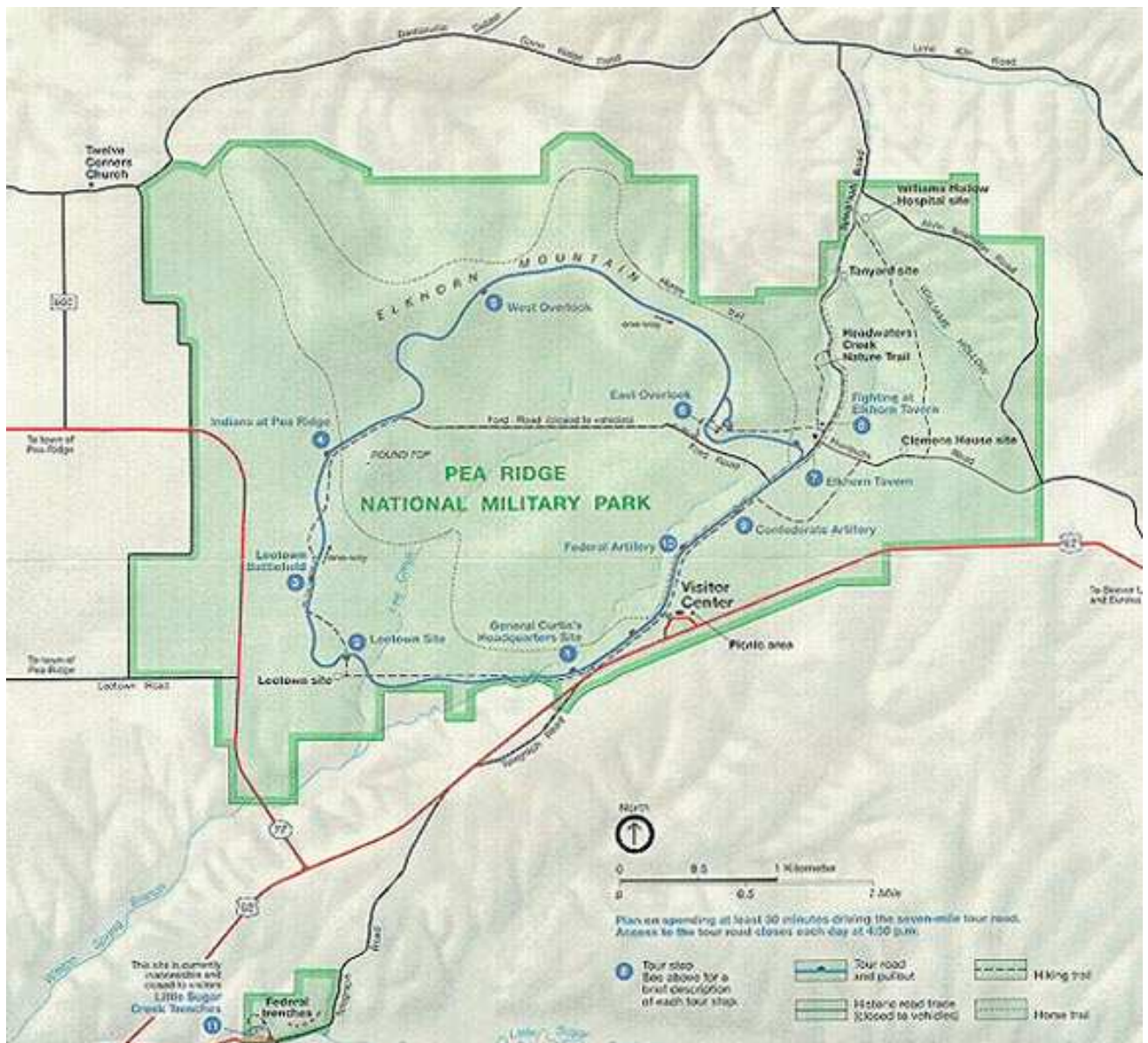
Westark Area Council has a patch that can be earned while at the Battlefield. You must hike the 10-mile hike and answer some questions along the way. It is a great place for young as well as older Scouts.

Pea Ridge Patch

You can earn this patch by hiking the battlefield trail and answer the trail questions. This patch can be purchased at the Pea Ridge National Military Park Visitor's Center.



Park Map



Vicksburg National Military Park

Vicksburg National Military Park
3201 Clay Street
Vicksburg, MS 39183-3495

Phone: 601-636-0583
FAX: 601-636-9497

Vicksburg National Military Park commemorates the campaign, siege and defense of Vicksburg. Vicksburg was a fortress located on high ground guarding the Mississippi River. Its surrender on July 4, 1863, coupled with the fall of Port Hudson, Louisiana, divided the South, and gave the North undisputed control of the Mississippi River. The Vicksburg battlefield includes 1,330 monuments and markers, a 16-mile tour road, a restored Union gunboat, and a National Cemetery.

U.S.S. Cairo Gunboat and Museum

The *U.S.S. Cairo* (pronounced Care-o), a Union ironclad commanded by Thomas O. Selfridge, Jr., was named for Cairo, Illinois, and commissioned on January 16, 1862. On December 12, 1862, in the Yazoo River north of Vicksburg, *Cairo* struck two underwater torpedoes (today called mines) sinking in less than 12 minutes with no loss of life. Preserved by mud and silt, *Cairo* sat on the bottom of the Yazoo River for 102 years. It was raised in 1964, and later restored. The ironclad is now on display within Vicksburg National Military Park.

Vicksburg Map



Vicksburg National Cemetery

Vicksburg National Cemetery encompasses 117.85 acres and includes over 18,000 interments. Graves of Civil War soldiers total 17,077, of which 12,909 are unknown. An additional 1,280 graves are occupied by soldiers who participated in the Indian Wars, Spanish-American War, World Wars I and II, and the Korean Conflict.

Commanders and Troops

Patriotism during the Civil War was deep-rooted, and over 600,000 enlisted men and officers would die in pursuit of two opposing dreams. These fighting men, both North and South, made the best of life on the battlefield and in camp, amid the hardship and tedium of soldiering.

Wilson's Creek National Military Park

Wilson's Creek was the first major Civil War battle fought west of the Mississippi River, and the scene of the death of Nathaniel Lyon, the first Union general killed in combat. Although a Southern victory, the Southerners failed to capitalize on their success. With the exception of the vegetation, the field has changed little and remains in near pristine condition.

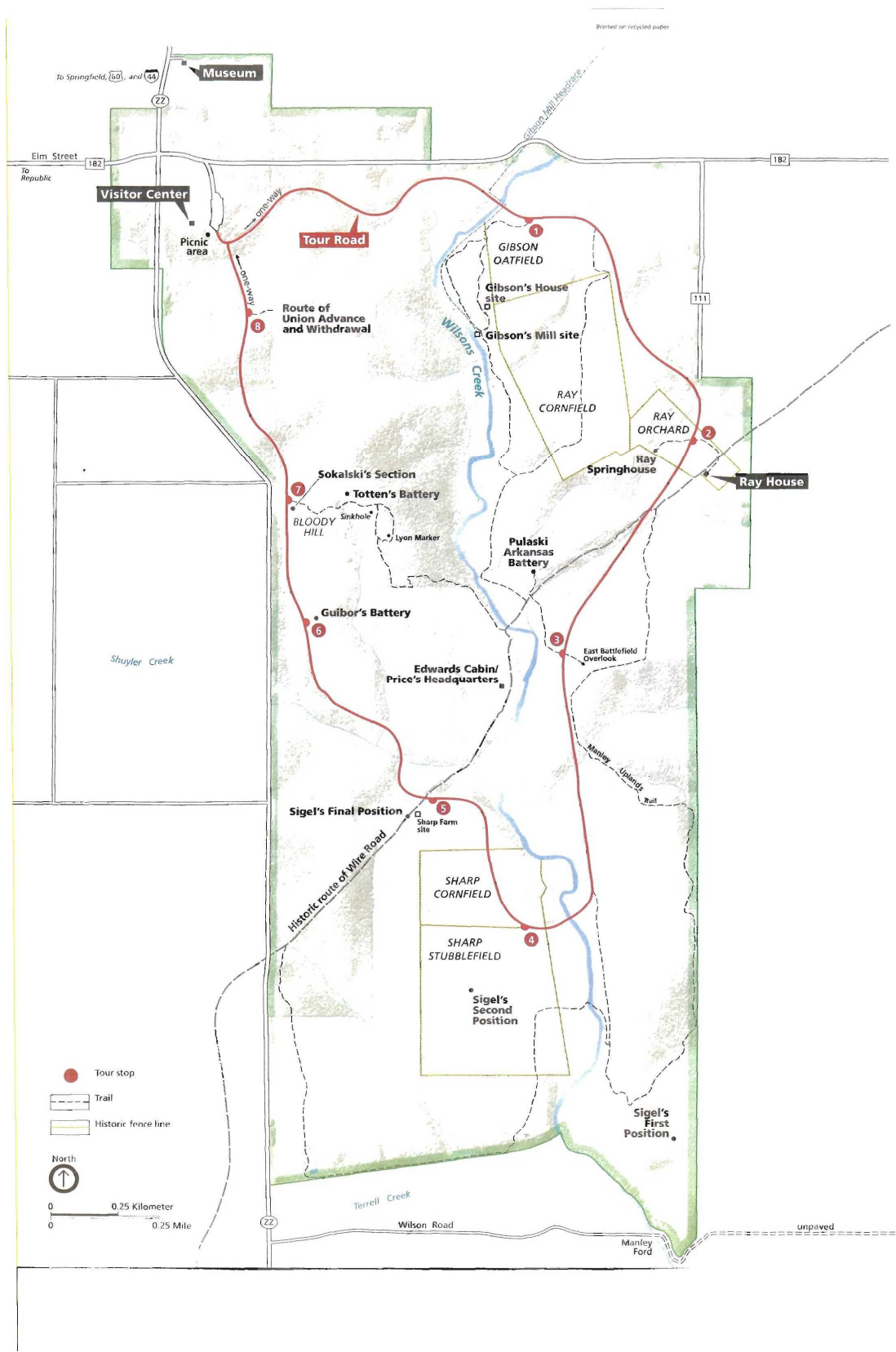
Operating Hours

Daily, except Thanksgiving, Christmas Eve, Christmas Day and New Year's Day.

Visitor Center hours are 8 a.m. to 5 p.m., seven days a week. Museum hours are 9 a.m.-Noon and 1-4 p.m., seven days a week. Note: **The museum will be closed in December, January, February and March.**

Park (Tour Road) hours are currently 8 a.m. to 9 p.m., seven days a week

Park Map



Zink Trails



Requirements

Each rocker is earned separately and can be earned more than once. The round Zink Trails patch is earned with the first rocker.

Black Dog Trail Requirements

Hike the approximately 8 mile long trail beginning at the Zink Marina and ending at the Boy Scout camping loop.



Black Dog Trail Rocker

Lake Canoe Requirements:

Canoe to campsites in Turkey Creek Cove and the islands for 2 nights.



Lake Canoe Rocker

Lake To Lake Requirements

Complete the hike from Lake Keystone to Turkey Creek on Lake Skiatook. Hike it entirely on the Zink Ranch.



Lake To Lake Rocker

Pack And Paddle Requirements

Troop conducts a 3-day 2-night trip canoeing to a campsite in Turkey Creek Cove and returning by backpacking to the Boy Scout Camp.



Pack And Paddle Rocker

Complete Patch



Contact Information

Indian Nations Council
4295 S. Garnett Road
Tulsa, Oklahoma 74146

Phone (918) 743-6125
Toll free (800) 367-1272

Fax: (918) 743-6049